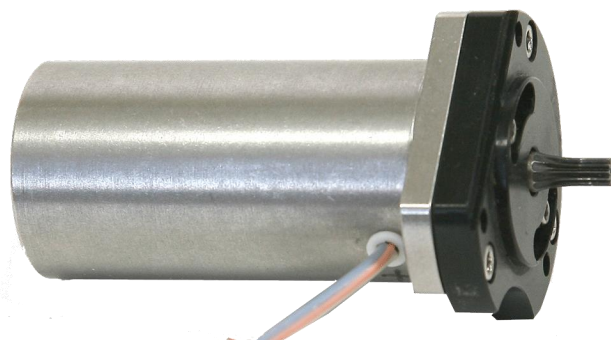


SMDC-BL-1903

This motor was especially designed for applications where high torque to volume ratio is needed. Peak torque obtained on the axis at nominal voltage of 26 V DC is 0.27 N*m. Pinion gear according to customer requirements. Available in different housings, or frameless. Is conform to MIL STD. Temperature range: -40 ÷ +80 [°C]. Vibration toleration: according to MIL-STD 810.

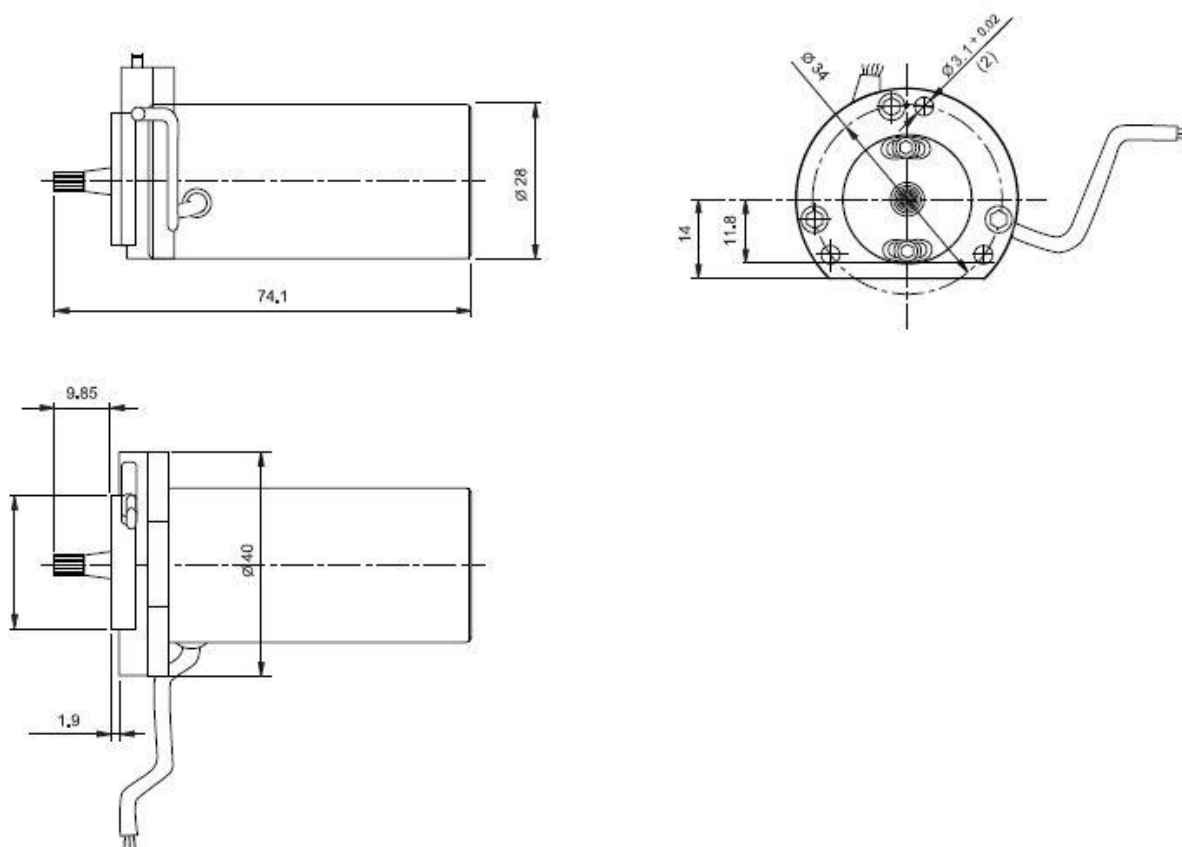


Specifications

Parameter	Unit	Value	Tolerance
Supply voltage	V DC	28	nom
No load speed	rpm	13,500	±10%
Resistance	Ohm	1.7	±15%
Inductance	mH	0.19	±25%
No load current	A	0.43	max
Back EMF constant	Volt/rad/sec	0.0190	±10%
Rotor inertia	Nm sec ²	$1.81 * 10^{-6}$	-
Mech. Time constant	ms	8.5	±15%
Electr. Time constant	ms	0.11	±35%
Peak torque (calc.)	Nm	0.270	±10%
Torque constant	Nm/A	0.019	±10%

SMDC-BL-1903

Drawing



All dimensions are in mm

For Additional Information

To learn more about the SMDC-BL-1903 or other MTC products, contact MTC on **+972 4 998 7772** or email **marketing@mtcind.com**