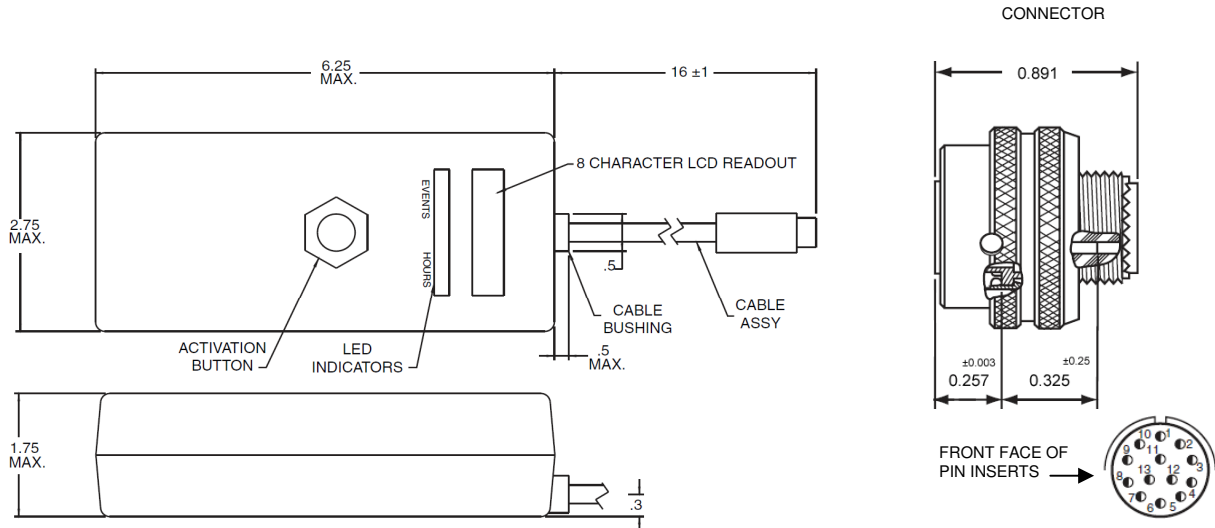




Elapsed Time Indicator

Elapsed Time Indicator for MVG-1806-1

The Elapsed Time Indicator, a measuring device especially adapted to MTC's Vertical Gyroscope Model MVG-1806-1, is used for the purpose of gathering usage-data for warranty application and maintenance support. This solid state elapsed time indicator records the time that power has been applied up to 99,999.99 hours. This very useful accessory allows MVG-1806-1 customers to follow-up on elapsed testing and flight hours.



Specification

Parameter	Value
Maximum weight	425 gr. (including battery)
Storage temperature range	-55°C to +85°C
Operating temperature range	-20°C to +55°C (continuous), -40°C to +71°C (intermittent operation)
Accuracy	± 0.05% (maximum deviation for the display)
Shock	MIL-STD-202E, Method 213B, Test Condition G 50g peak, 11 millisecond sawtooth.
Vibration	MIL-STD-202E, Method 201A 10 to 55 Hz, 1.5 mm double amplitude.
Power source	9 Volt Alkaline Manganese primary battery (NEDA 1604)
Battery life	1,200 readings or 2 years (whichever comes first), at 25°C
Power consumption	Discharge current shall not exceed 60 mA at any time during operational cycle; 2 uA when non-operational.