

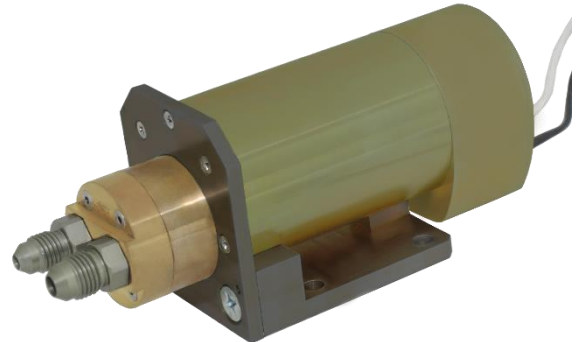
FP-3508

Gear Fuel Pump

The **FP-3508** is a gear pump with DC brushless electrical motor with built in servo driver.

Pump Construction: -

- Brass pump body with stainless steel gear.
- 37° flare inlet/outlet port fittings.
- Lightweight electrical motor
- Versatile mounting holder.

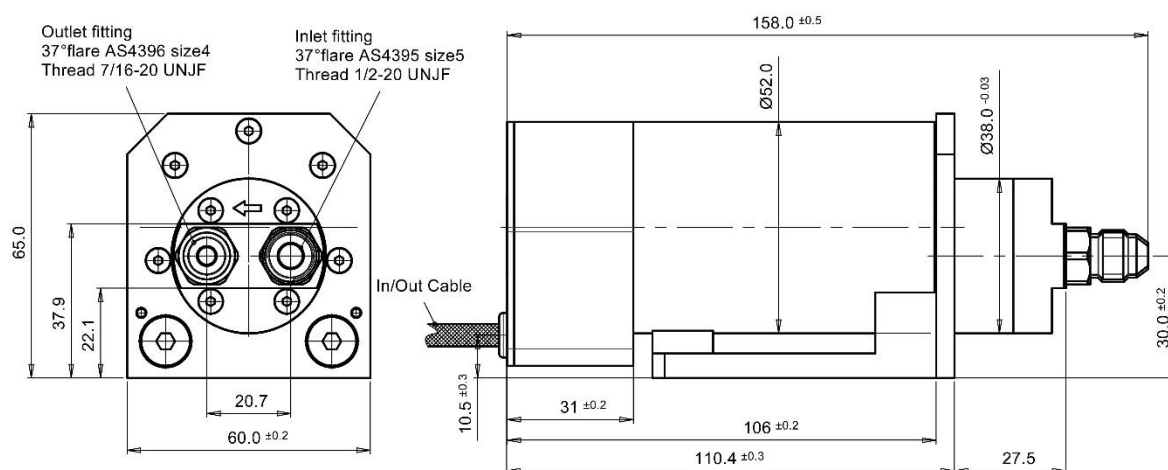


Specifications

Parameters	Units	Values	Tolerances
Performance			
Fluids		JP-8,JP-10	
Flow measuring range	gr/sec	3.0- 35.0	
Max. pressure	bar	8 at	
Speed range	rpm	300 - 5500	
Temperature range	°C	-40 to +70	
Mass	Kg	1.2	
Electrical			
Supply Voltage	VDC	24-32 (28 nominal)	
Current (nominal voltage @ max pressure)	A	5.0	(28V, 8 bar)
Communication			
RS-422, baud rate 115Kbits/sec, maximum frame 200Hz			
Input Command		Message 16 bytes	Main Parameter – Speed RPM
Output Feedback		Message 32 bytes	Main Parameter – Measured speed RPM Measured Current A

FP-3508 (continued)

Drawing



I/O ELECTRICAL SCHEME

